

**“MIAMI RIVER BASIN WATER QUALITY IMPROVEMENT REPORT”**  
**Action Item Matrix Quarterly Progress Report**

Third Quarterly Report, 2009  
(July - September)

**Action Item:**

4. Monitoring and Research

- a. Continue monthly monitoring for water quality of Wagner Creek, Miami River, and adjoining Biscayne Bay

<b>Lead Agency:</b>	Miami-Dade County DERM
<b>Contact Name</b>	Stephen Blair or Omar Abdelrahman, DERM
<b>Address</b>	701 NW 1 <sup>st</sup> Court Miami, FL 33136
<b>Telephone</b>	(305) 372-6853 or (305) 372-6872
<b>Fax</b>	(305) 372-6649
<b>E-mail</b>	<a href="mailto:blairs@miamidade.gov">blairs@miamidade.gov</a> <a href="mailto:abdelo@miamidade.gov">abdelo@miamidade.gov</a>

**Action Item Status:**

Miami-Dade DERM has continued to collect monthly water quality samples in the Miami River and its tributaries (including Tamiami Canal and Wagner Creek). During the Third quarter of 2009 samples were collected at each of the ten stations in the River on July 7, August 4, and September 15. Costs for sampling (including salaries and fringe and analysis) have been calculated at approximately \$320 per station per month. See table provided in the first quarterly report of 2002 for a matrix of parameters collected on the Miami River during DERM’s monthly “Bay Run” and the frequency with which various types of parameters are collected. No sewage spills were reported on or around the River during the quarter. Such notification typically results in additional an emergency sampling response.

See **Figures 1 - 3** below for maps showing monthly Total Coliform results from July – September at stations in the Miami River and vicinity. **Figure 4** is a quarterly composite of Total Coliform results from station locations on the Miami River and its tributaries showing how frequently the results at each station exceeded the County standard (1000 cfu/100ml) during the First quarter of the year. Table 1 lists the observed Total Coliform levels in Wagner Creek form July – September 2009.

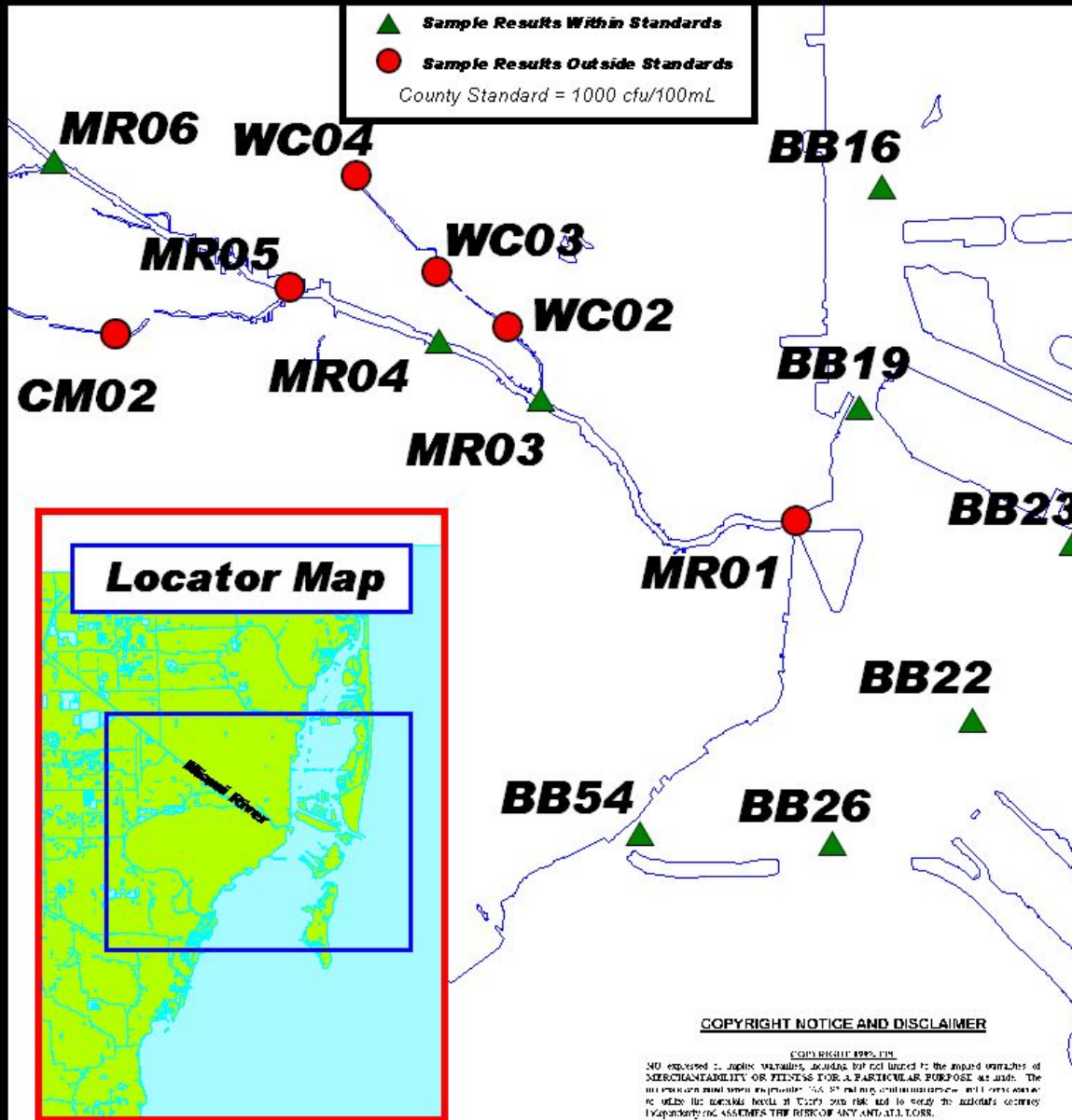
**“MIAMI RIVER BASIN WATER QUALITY IMPROVEMENT REPORT”**  
**Action Item Matrix Quarterly Progress Report**

**Biscayne Bay Surface Water Quality Monitoring Program**  
**Water Quality Sample Compliance**  
**July 2009**

**Miami River & Tributaries**



▲ **Sample Results Within Standards**  
● **Sample Results Outside Standards**  
County Standard = 1000 cfu/100mL



**COPYRIGHT NOTICE AND DISCLAIMER**

©2009 BENTLEY SYSTEMS, INC.  
NO WARRANTY IS MADE BY BENTLEY SYSTEMS, INC. WITH REGARD TO THE MERCHANTABILITY OR FITNESS FOR A PARTICULAR PURPOSE OF ANY OF THE INFORMATION OR DATA HEREIN. THE USER ASSUMES ALL LIABILITY FOR ANY DAMAGE TO ANY DATA OR INFORMATION STORED ON OR TRANSMITTED BY ANY SYSTEMS, INCLUDING THE USER'S OWN SYSTEMS, AND FOR ANY LOSS OF DATA OR INFORMATION STORED ON OR TRANSMITTED BY ANY SYSTEMS, INCLUDING THE USER'S OWN SYSTEMS, AND FOR ANY LOSS OF DATA OR INFORMATION STORED ON OR TRANSMITTED BY ANY SYSTEMS, INCLUDING THE USER'S OWN SYSTEMS.

# Biscayne Bay Surface Water Quality Monitoring Program

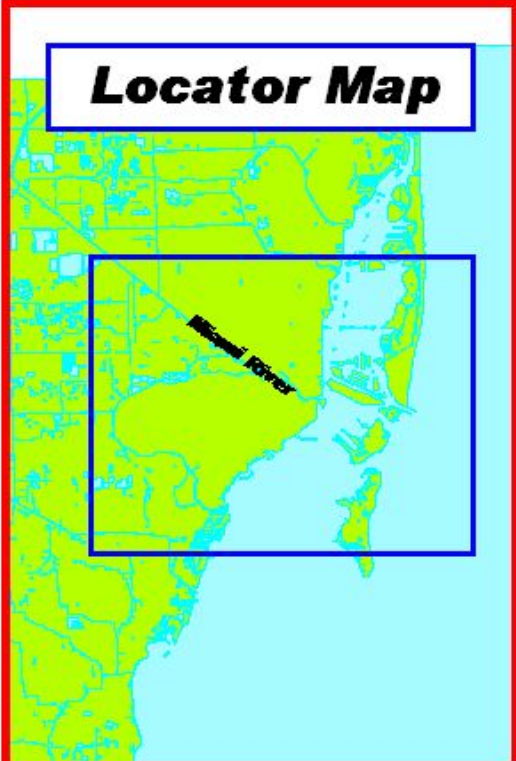
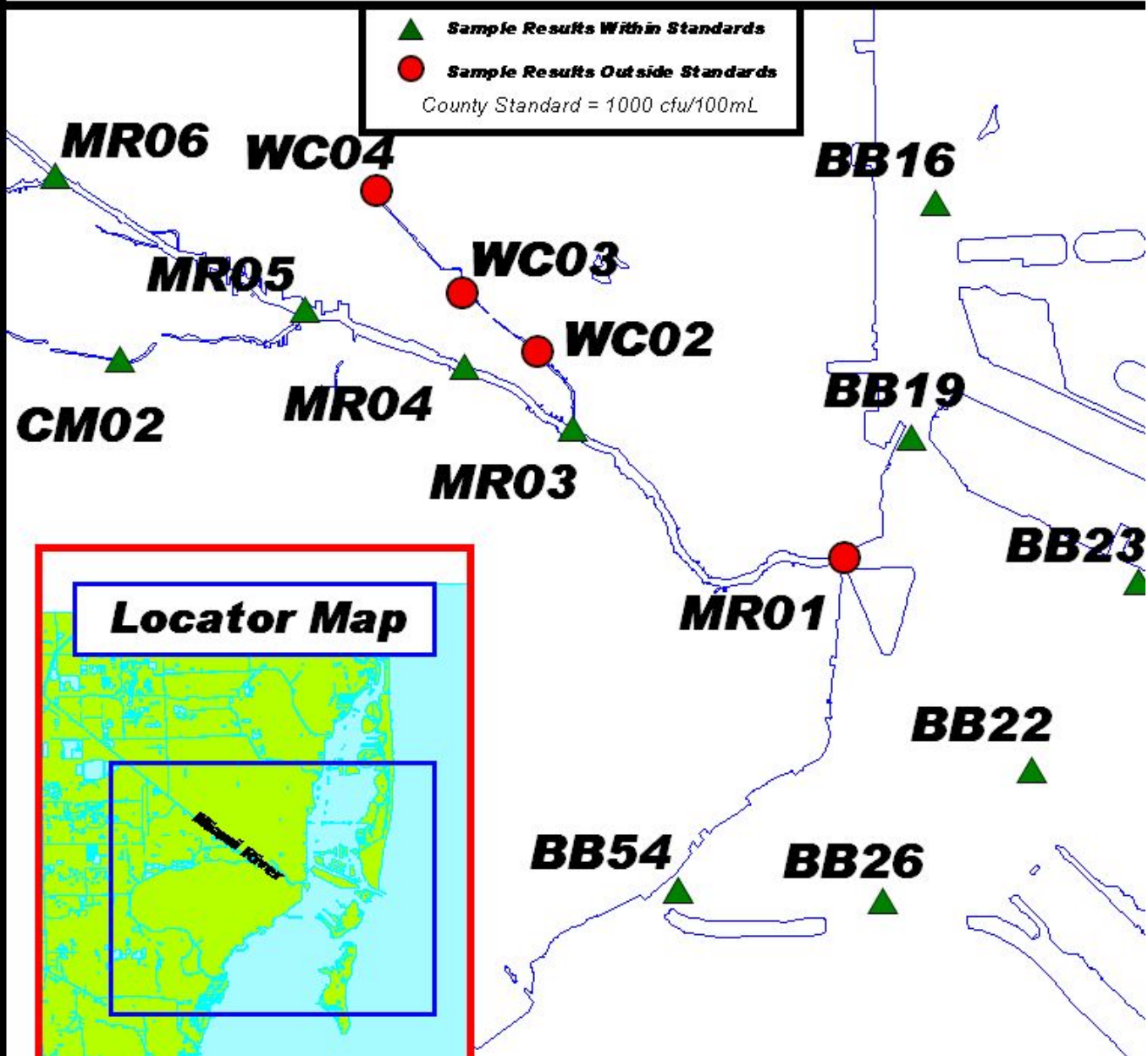
## Water Quality Sample Compliance

### August 2009

Miami River & Tributaries



▲ Sample Results Within Standards  
 ● Sample Results Outside Standards  
 County Standard = 1000 cfu/100mL



**COPYRIGHT NOTICE AND DISCLAIMER**

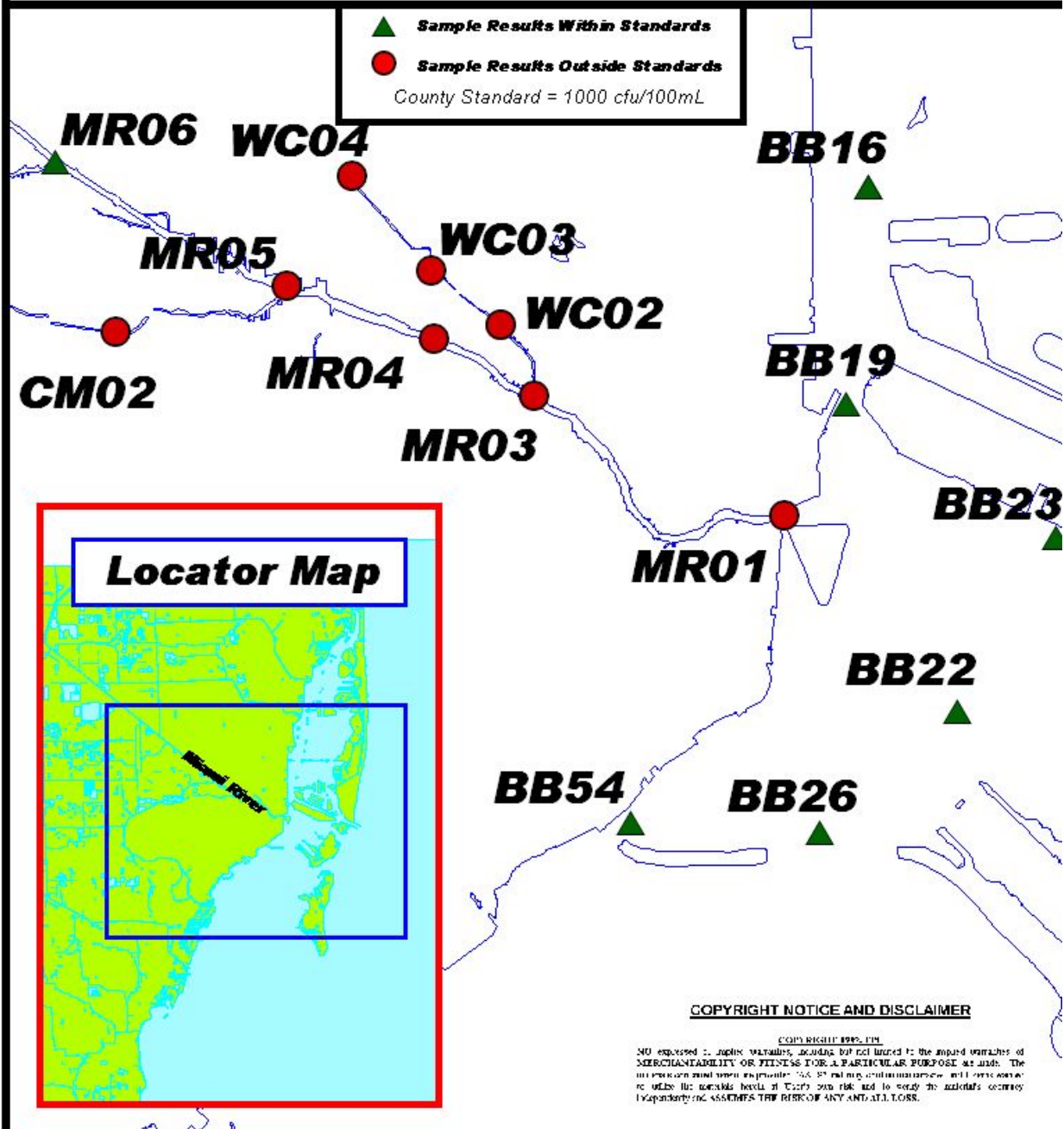
COPYRIGHT 1995, DTP  
 NO expressed or implied warranty, accuracy, or reliability is made in the use of the information contained herein for any purpose other than that for which it was originally intended. The user assumes all liability for any and all loss, damage, or injury resulting from the use of the information contained herein.

# Biscayne Bay Surface Water Quality Monitoring Program

## Water Quality Sample Compliance

### September 2009

#### Miami River & Tributaries

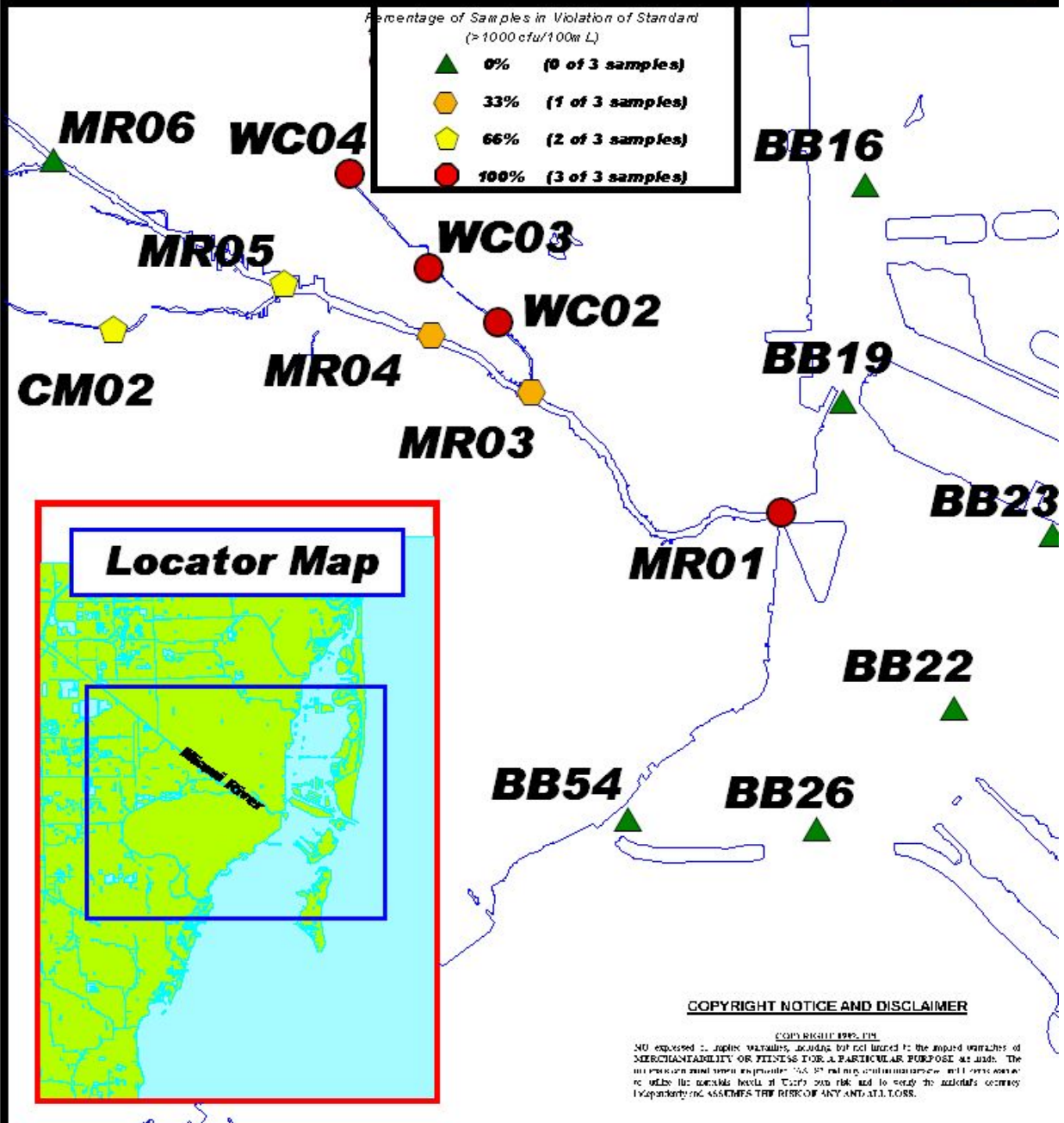


# Biscayne Bay Surface Water Quality Monitoring Program

## Water Quality Sample Compliance

### July to September 2009

#### Miami River & Tributaries



**Table 1.**

MONTHLY TOTAL COLIFORM LEVELS (cfu's/100 ml) IN WAGNER CREEK				
	<b>WC04</b>	<b>WC03</b>	<b>WC02</b>	<b>MR03</b>
<b>July</b>	<b>8400*</b>	<b>12000*</b>	<b>15000*</b>	<b>700</b>
<b>August</b>	<b>15000*</b>	<b>10000*</b>	<b>8000*</b>	<b>100</b>
<b>September</b>	<b>8000*</b>	<b>31000*</b>	<b>24000*</b>	<b>1800*</b>

A \* indicates results that exceed the County Standard (1000 cfu/100ml).

Third Quarterly Report, 2009  
(July - September)

**Action Item:**

- 5. Management
  - d. Establish standardized water quality tracking for key characteristics

**Lead Agency:** Miami-Dade County DERM

**Contact Name** Omar Abdelrahman DERM  
**Address** 701 NW 1<sup>ST</sup> Court  
Miami, FL 33136

**Telephone** (305) 372-6872

**Fax** (305) 372-6630

**e-mail** [abdelo@miamidade.gov](mailto:abdelo@miamidade.gov)

**Action Item Status:**

This report presents selected results of the water quality monitoring that occurred in the Third quarter (July- September) of 2009. Due to the extensive nature of the database, it is not feasible to track each parameter collected at each station for the period of record. Therefore, representative stations and parameters have been selected to achieve the objective of this Action Item. Current water quality trends will be tracked by plotting the actual sample results of several key parameters (see **Charts 1 – 4** for graphs of ammonia nitrogen, total phosphate, total/fecal coliform, and turbidity data) from a station representing the Miami River (MR03) against the same parameters evaluated at another station in adjacent Biscayne Bay (BB22). See maps presented under action item 4.a for station locations. Data collected at both stations during the most recent quarter are plotted in time series along with historic data from the previous ten-year (1999 - 2009) period. For further comparison, the target values developed under Action Item 4.f are plotted, and where applicable, the existing state or county standard for each parameter is shown.

Chart 1.

### Ammonia Nitrogen Tracking Ten Year Period: 1999 - 2009 Third Quarter 2009 Data (Jul - Sept) Highlighted

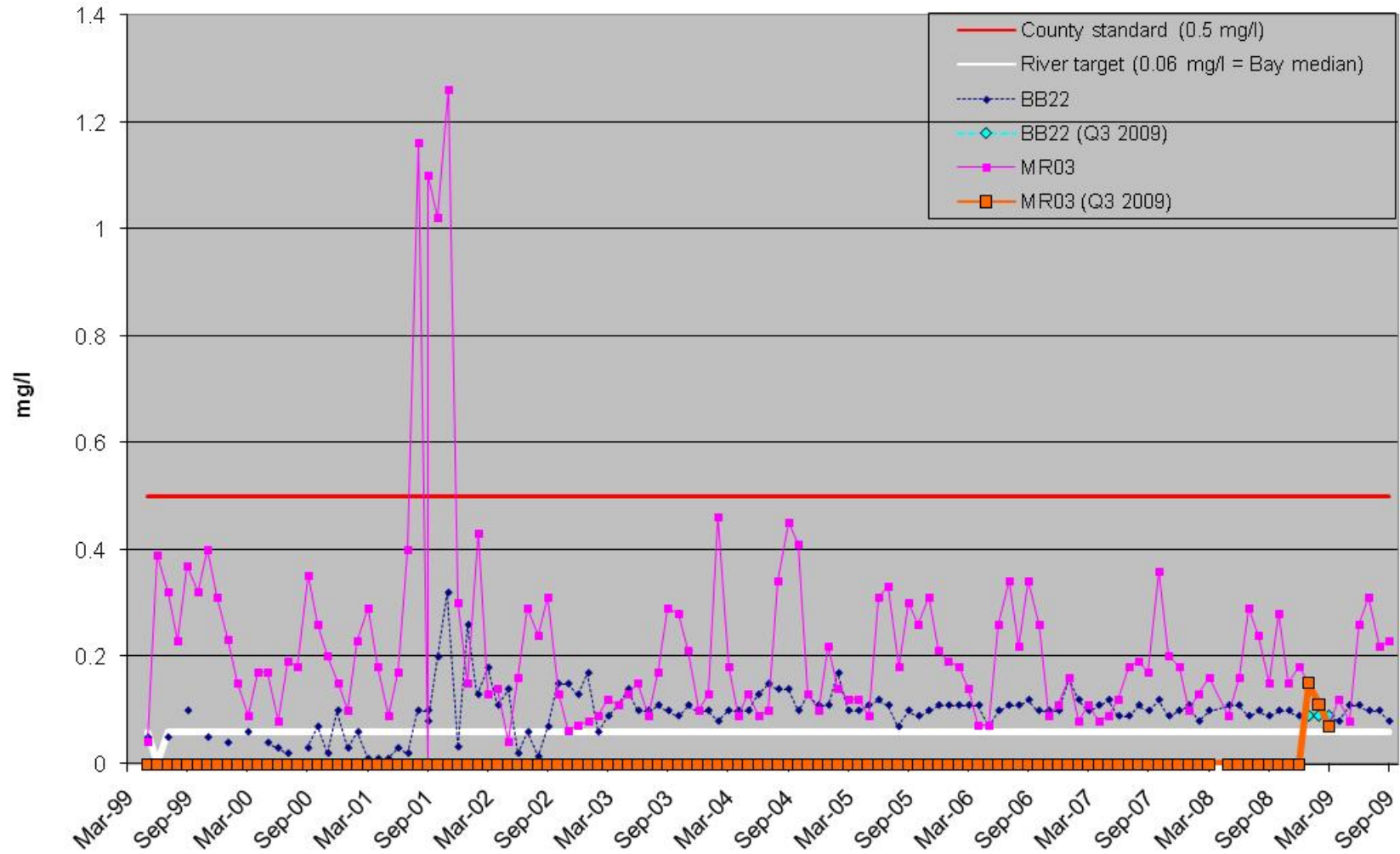




Chart 2.

### Total Phosphate Tracking Ten Year Period: 1999 - 2009 Third Quarter 2009 Data (Jul - Sept) Highlighted

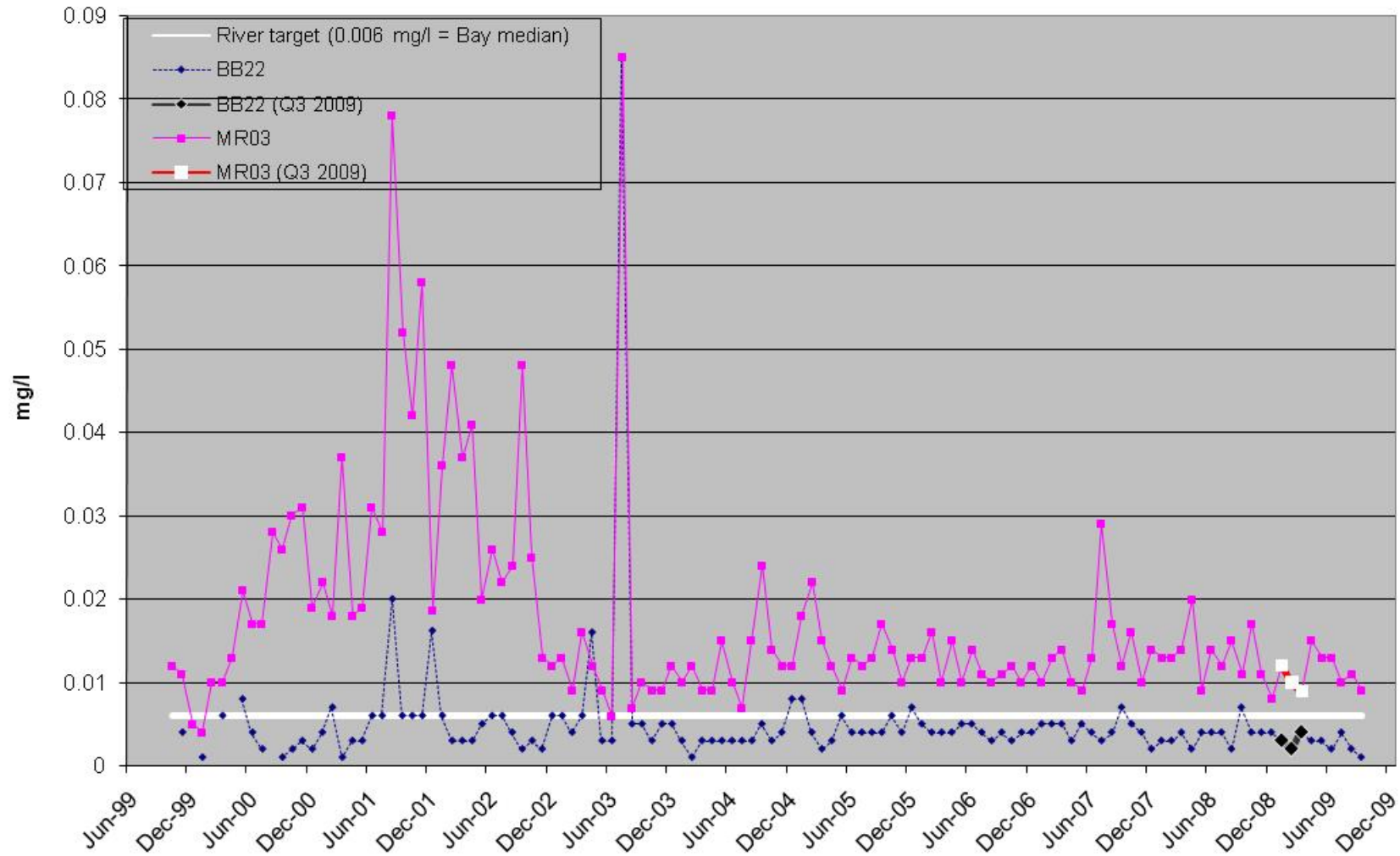


Chart 3.

### Coliform Tracking Ten Year Period: 1999 - 2009 Third Quarter 2009 Data (Jul - Sept) Highlighted

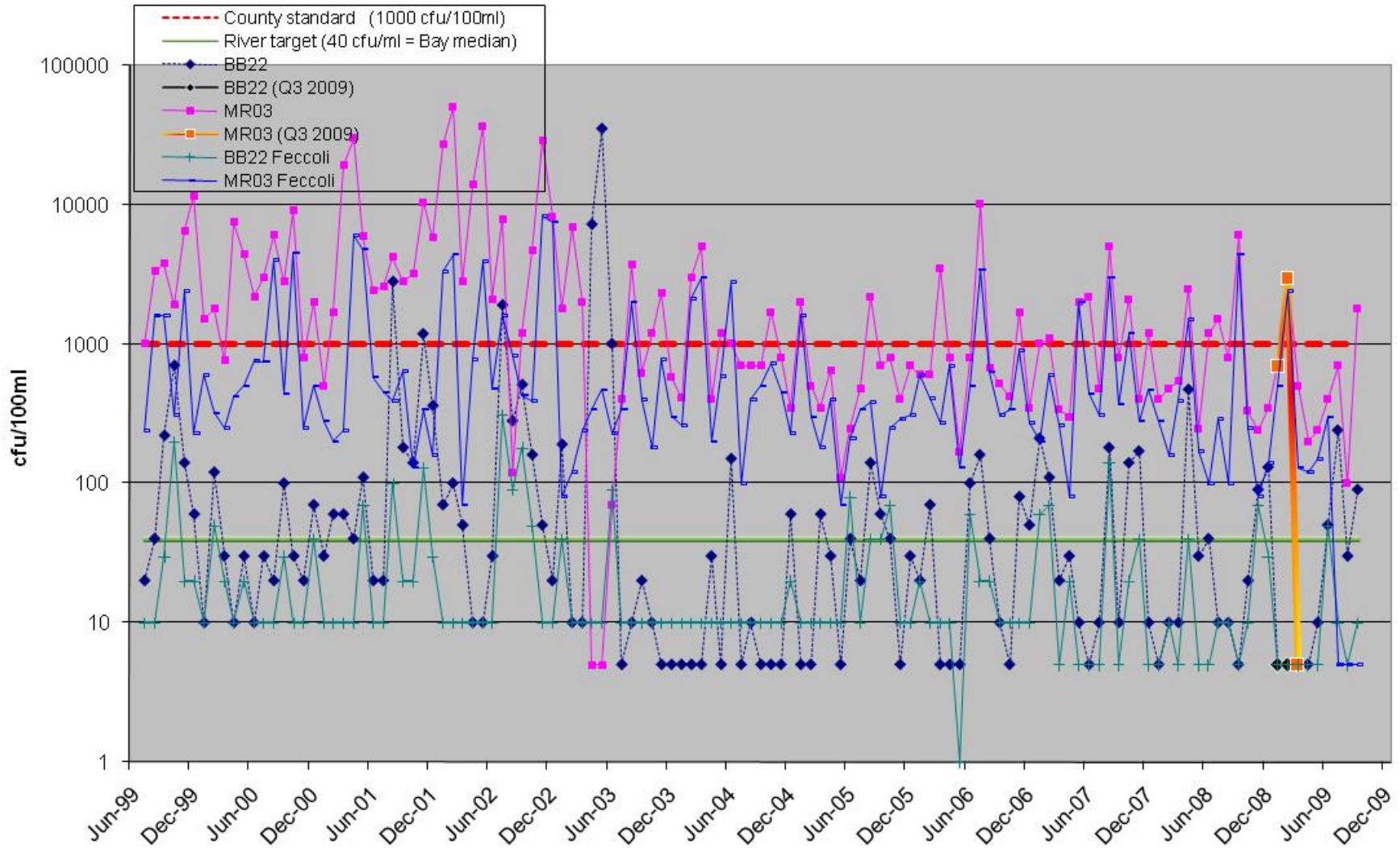


Chart 4.

### Turbidity Tracking Ten Year Period: 1999 - 2009 Third Quarter 2009 Data (Jul - Sept) Highlighted

